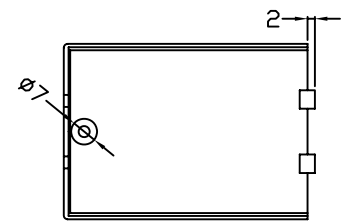
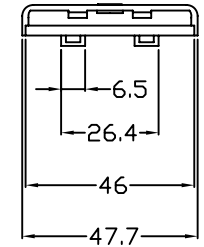
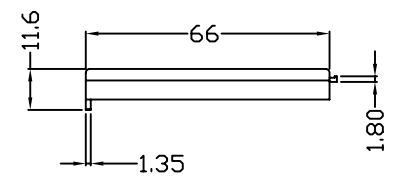
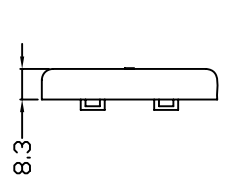
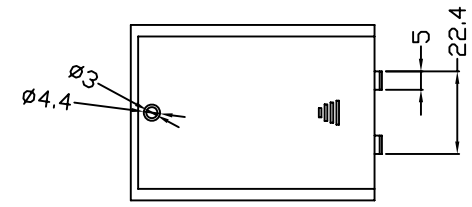
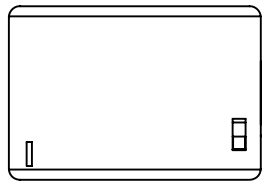
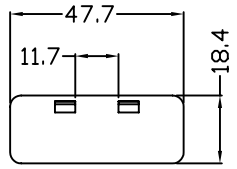
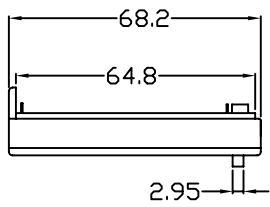
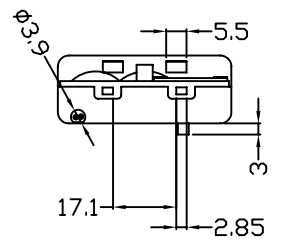
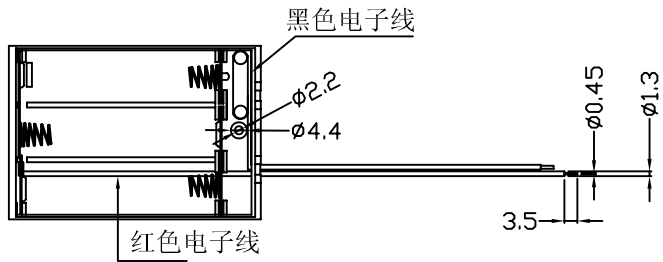


标记	日期	姓名	变更内容
----	----	----	------




未注公差尺寸	线性尺寸	>0~6 ±0.05	型号:
		>6~20 ±0.1	
		>20~50 ±0.2	料号:
		>50~100 ±0.4	
		>100 ±0.8	模具单位: MM 比例: 1: 1
		角度尺寸 ±2°	
设计			版本号 版本: A1 视角:
审核			
批准			第 1 页 共 1 页
生效时间			