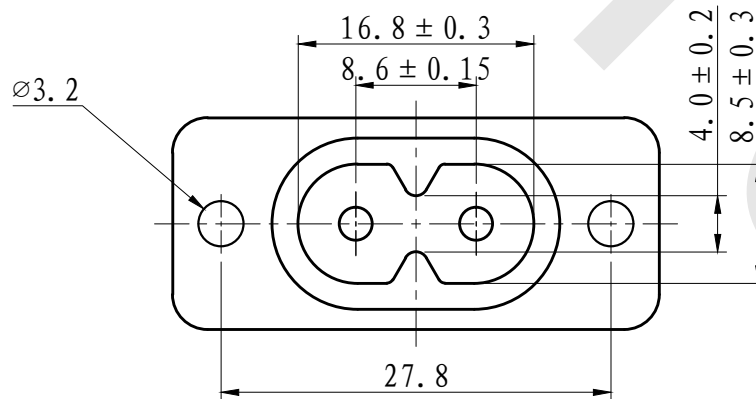
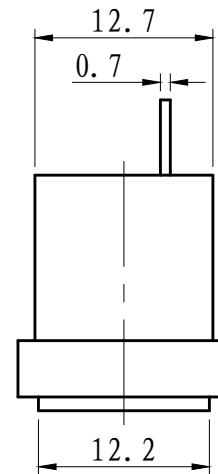
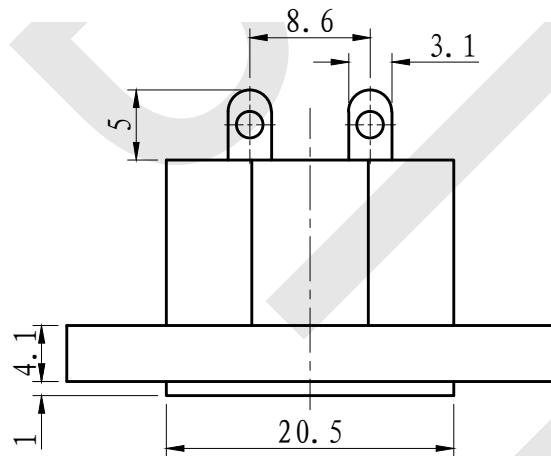
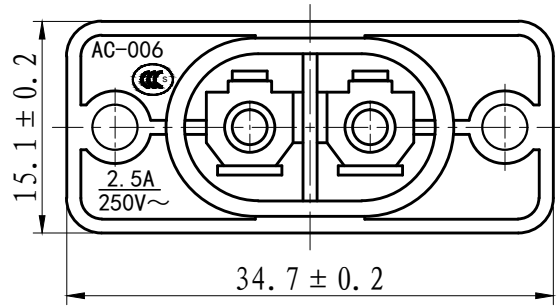


900-dLR



Specifications		
Rating	2.5A 250VAC	
Environment Temperature	0°C ~ 70°C	
Contact Resistance		
Insulation Resistance	≥ 10MΩ (at 500VDC)	
Voltage proof	Terminal-terminal	1500V AC/60s
	Terminal-knob	3000V AC/60s
Electric life	insert/select each 1000 Cycles	
Mechanical life	insert/select each 3000 Cycles	

NOTE:
TOLERANCE UNLESS OTHERWISE SPECIFIED
X. ± 0.4 . X ± 0.3 . XX ± 0.2

借(通)用件登记

旧底图总号

底图总号

签名

日期

				Product drawing				AC Power socket	
标记	处数	更改文件号	签名	日期	投影	版次	重量	比例	BTP-006
设计			标准化		第一角	A0		2:1(A4)	
审核			批准						
工艺			日期		共 1 页		第 1 页		

Products model 产品型号: AC-006	TITLE 标题: PRODUCT SPECIFICATIONS 产品规格书	Page 页数 1/3
---------------------------------------	---	----------------

1. General 总则
- 1.1 Scope 范围 This specification is applied to AC Power Socker used for electronic equipment.
这规格适应于使用在电器设备的 AC 插座。
- 1.2 Operating temperature range 操作环境温度 0~+70℃
- 1.3 Test conditions 测试条件 Unless otherwise specified, the atmospheric conditions for making measurements and tests are as follows. 除另有规定外, 测量和测试的大气条件如下:
- 1.3.1 Ambient temperature 环境温度: 15-35℃; 1.3.2 Relative humidity 相对湿度: 45-85%
- 1.3.3 Air pressure 气压: 86-106 kPa (860-1060 mbar)
- 1.4 Should any doubt arise in judgement, tests shall be conducted at the following conditions. 在判断时出现争议, 就照下列条件测试
- 1.4.1 Ambient temperature 环境温度: 20±2℃ 1.4.2 Relative humidity 相对湿度: 60-70%
- 1.4.3 Air pressure 气压: 86-106 kPa (860-1060 mbar)

2. Appearance, construction and dimensions 外观、结构和尺寸
- 1.1 Appearance 外观: Switch shall have no rust, crack and plating failures. 开关表面无锈斑、开裂和电镀不良
- 2.2 Construction and dimensions 结构和尺寸 Refer to individual product drawing. 参照产品图

3. Ratings 额定值 2.5A 250VAC

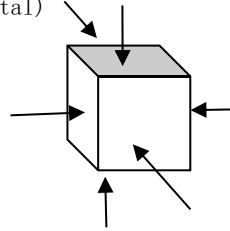
4. Electrical specification 电性能

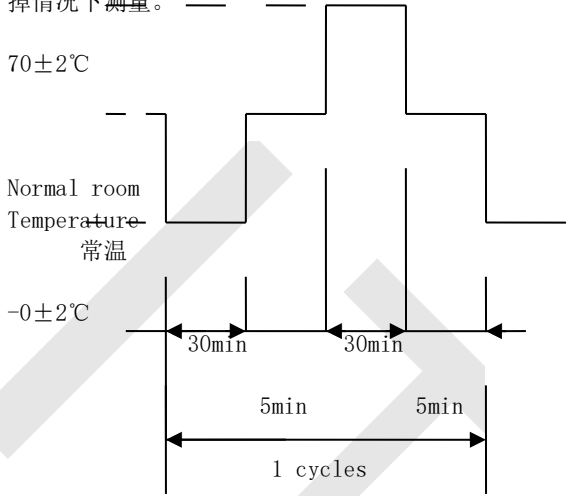
Items 项目	Test conditions 测试条件	Criteria 标准
4.1 Contact resistance 接触电阻	Shall be measured at 0.1A, 6~8V DC by voltage drop method after some operations without load. 无负载操作几次后, 用直流 0.1A 6~8V 的设备点滴测试方法。 Applied position 适应位置: Between terminal and terminal (Between contact terminal) 端子之间 (连接端子之间)	/
4.2 Insulation resistance 绝缘电阻	Test voltage 测试电压: 500 V DC, measured after 1min±5s 测量时间 1min±5s Applied position 适应位置: Between terminal and terminal (Between no contact terminal) 端子之间 (不接端子之间)	10 MΩ MIN
4.3 Voltage proof 耐压	Following test voltages shall be applied for 1min. 如下电压, 加压时间 1 分钟 (Cut-off current 漏电流: 10mA) 1. Between terminal and terminal 端子之间: 1500V AC (50~60Hz) 2. Between terminal and knob 端子与按钮之间: 3000VAC	No dielectric breakdown shall occur. 不击穿

5. Mechanical specification 机械性能

No. 序号	Item 项目	Test condition 测试条件	Criteria 标准
5.1 Operating features 操作特性	5.1.1 Operating force 操作力	A static load shall be applied to the tip of button in positive operating direction. 在按钮头部施加一个力使之在一个方向动作.	/
5.2	Vibration 振动	Switch shall be mount to a testing machine test. Parameters of test as follows 开关必须安装在测试设备上做测试, 测试参数如下: (1) Vibration frequency range: 10-55 Hz 振动频率范围: 10-55 Hz (2) Total amplitude 振幅: 1.5mm (3) Sweep cycle 扫频循环: 10-55-10 Hz (4) Method of changing the sweep vibration frequency 振动频率扫频方法: Logarithmic or linear. 对数或线性 (5) Direction of vibration: Three perpendicular directions including actuator. 振动方向: 3 轴方向包括操作件。 (6) Duration 周期: 2 h each (6 h in total) 每个方向 2 个小时 (共 6 个小时)	Voltage proof: (Item 4.3): 耐压 No dielectric breakdown shall occur. 电气不击穿 Operating force (Item 5.1): 操作力在规定值内 Shall be free from mechanical Abnormalities 无机械异常

Products model 产品型号: AC-006		TITLE 标题 PRODUCT SPECIFICATIONS 产品规格书	Page 页数 2/3
Item 项目	Test condition 测试条件		Criteria 标准
5.3	Shocks 冲击	Switch shall be measured after following test at the condition of releasing self-lock. 开关在断开状态测试后做测量。 (1) Mounting method : Normal mounting method 安装方法: 一般安装 (2) Acceleration 加速度 : 30g (3) Duration 周期 : 11ms (4) Test direction 测试方向 : 6 directions (5) Number of shocks : 3 times per direction (18 times in total) 冲击次数: 每个方向 3 次 (共 18 次)	Voltage proof (Item 4.3): 耐压 No dielectric breakdown shall occur. 电气不击穿 Operating force (Item 5.1): Within specified value. 操作力在规定值内 Shall be free from mechanical abnormalities 无机械异常
6. Environmental test 环境实验			
Item 项目	Test conditions 测试条件		Criteria 标准
6.1	Low temperature 低温	After testing at $0\pm 2^{\circ}\text{C}$ for 48 h, the switch shall be allowed to stand under normal room temperature and humidity condition for 1h, and then measurement shall be made within 1 h. Water drops shall be removed. 开关在 $0\pm 2^{\circ}\text{C}$ 停留 48 小时测试后, 在常温和常湿的条件下放 1 个小时, 让表面水滴干掉情况下测量。	Voltage proof (Item 4.3): 耐压 No dielectric breakdown shall occur. 电气无击穿 Operating force (Item 5.1): Within specified value. 操作力在规定值内 No abnormalities shall be recognized in appearance and construction. 在结构和外观上无异常
6.2	High temperature 高温	After testing at $70\pm 2^{\circ}\text{C}$ for 48 h, the switch shall be allowed to stand under normal room temperature and humidity condition for 1 h, and then measurement shall be made within 1 h. Water drops shall be removed. 开关在 $70\pm 2^{\circ}\text{C}$ 停留 48 小时测试后, 在常温和常湿的条件下放 1 个小时, 让表面水滴干掉情况下测量。	
6.3	Damp heat, steady state 恒定湿热	After testing at $40\pm 2^{\circ}\text{C}$ and 90-95%RH for 96h, the switch shall be allowed to stand under normal room temperature and humidity condition for 1h, and then measurement shall be made within 1h. Water drops shall be removed. 开关在 $40\pm 2^{\circ}\text{C}$ 湿度 90-95%RH 停留 48 小时测试后, 在常温和常湿的条件下放 1 个小时, 让表面水滴干掉情况下测量。	



Products model 产品型号: AC-006		TITLE 标题 PRODUCT SPECIFICATIONS 产品规格书	Page 页数 3/3
	Item 项目	Test condition 测试条件	Criteria 标准
6.4	Salt mist 盐雾	Switch shall be checked after following test. 测试后开关必须检查 (1)Temperature 温度: / (2)Salt proportion 盐份比例: / (3)Duration 周期: / After test, salt deposit shall be removed in running water. 测试后, 盐分必须用流动水冲洗。	No remarkable corrosion shall be recognized in metal part. 金属件表面无明显腐蚀
6.5	Change of temperature 高低温变化	After 5 cycles of following conditions the switch shall be allowed to stand under normal room temperature and humidity condition for 1h, and then measurement shall be made within 1h after that. Water drops shall be removed. 开关按下列条件做 5 个循环测试后, 在常温常湿下停留 1 个小时使表面水滴干掉情况下测量。 	Voltage proof (Item4.3): 耐压 No dielectric breakdown shall occur. 电气无击穿 Operating force (Item5.1): 操作力在规定值内 Within specified value. No abnormalities shall be recognized in appearance and construction. 在结构和外观上无异常
7. Electrical performance 电气性能			
	Item 项目	Rating 参数	Criteria 标准
7.1	Endurance 耐久性	2.5A 250VAC 3E3	According to GB17465 参照 GB17465