

P 系列 P Series

产品特点 Features

- 单相交流电源滤波器
Single Phase AC Filters
- 插针式PCB安装
PCB mounting
- 体积小
Compact unit

应用范围 Applications

- 用于模块电源与小型电子仪器
Modular power supplies & mini-electronic instruments

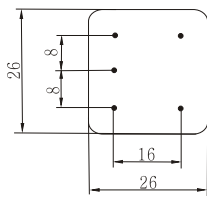
技术参数 Technical Data

额定电压 Rated Voltage	115/250VAC
工作频率 Line Frequency	50/60Hz
测试电压 Test Voltage	1500VDC (line/line) 1500VAC (line/ground)
绝缘电阻 Insulation Resistance	> 50MΩ@500VDC
温升 Temperature Rise	< 30°C
气候类别 Climatic category	25/085/21

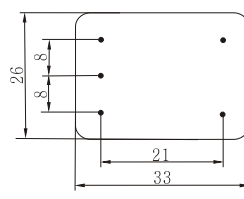
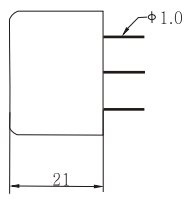
常规产品列表 List of general products

型号 Part No.	额定电流 Rated Current	泄漏电流 Leakage Current	外壳型号 Dimension	连接方式 Terminal		电路图 Electrical Schematics
				入 Input	出 Output	
DAP1-1A	1A	<0.5mA	P1	■	■	<p>图A</p>
DAP1-2A	2A	<0.5mA	P1	■	■	
DAP1-3A	3A	<0.5mA	P1	■	■	
DAP1-6A	6A	<0.5mA	P1	■	■	
DBP2-1A	1A	<0.5mA	P2	■	■	<p>图B</p>
DBP2-3A	3A	<0.5mA	P2	■	■	
DCP3-1A	1A	<0.5mA	P3	■	■	<p>图C</p>
DCP3-3A	3A	<0.5mA	P3	■	■	

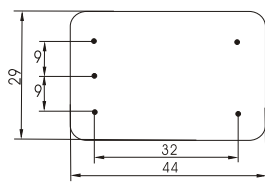
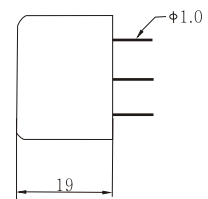
外形尺寸 Outline Drawing and Dinensions(mm)



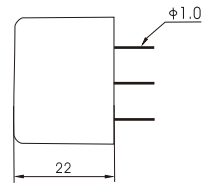
P1



P2

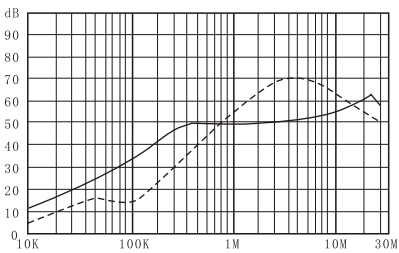


P3

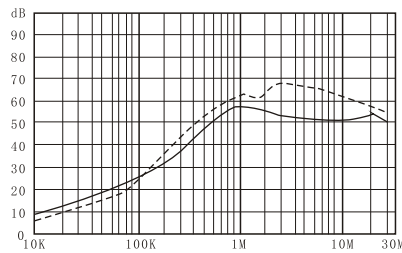


插入损耗 Insertion Loss

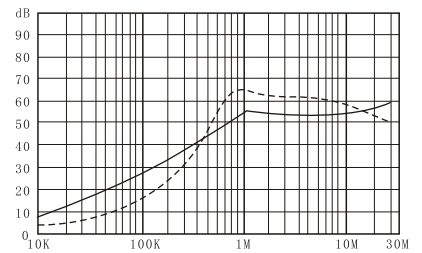
—— 共模 (Common Mode) - - - - 差模 (Differential Mode)



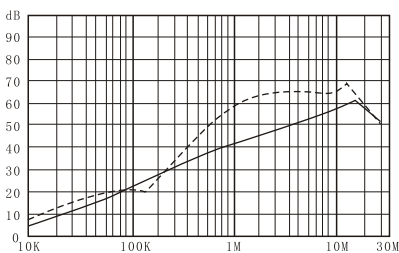
DAP1-1A



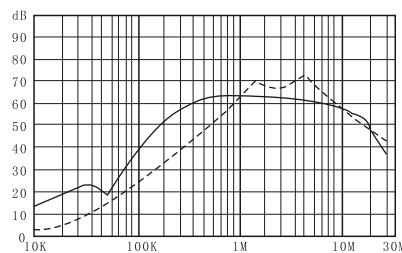
DAP1-2A



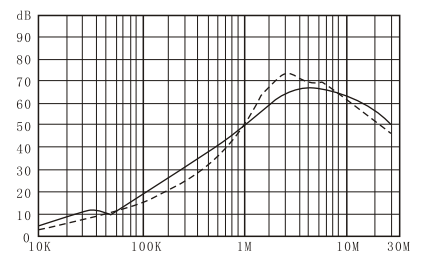
DAP1-3A



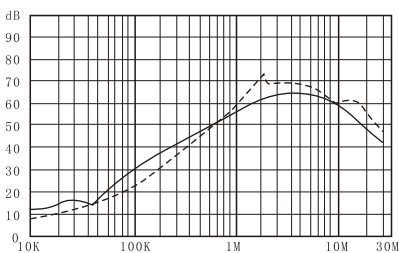
DAP1-6A



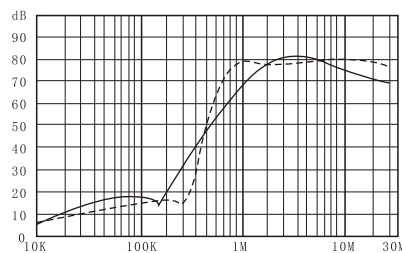
DBP2-1A



DBP2-3A



DCP3-1A



DCP3-3A