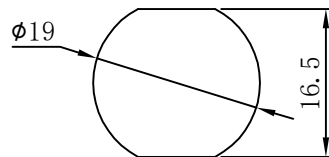


Mounting Size



The Main Technology Performance

Item	Parameter
Rated voltage	3A 250VAC
Rated current	6A 125VAC (With LED)
Insulated resistance	DC 500V 100MΩ min
Contact resistance	50mΩ Max
Dielectric strength	AC 1500V 1 minute
Operating Temperature	-25℃ ~ +85℃
Electrical Life	≥10000 Cycles

No.	Verin
Design	
Check	
Process	
Standard	
Verified	
Approved	

Layout drawing	Only For Reference			
Model: BTK19-06		BITUD ELECTRIC CO.,LTD		