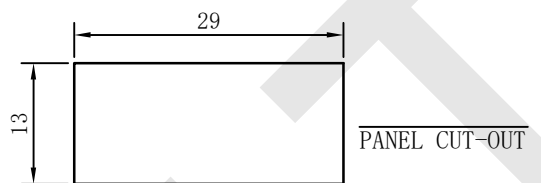
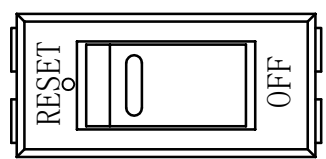
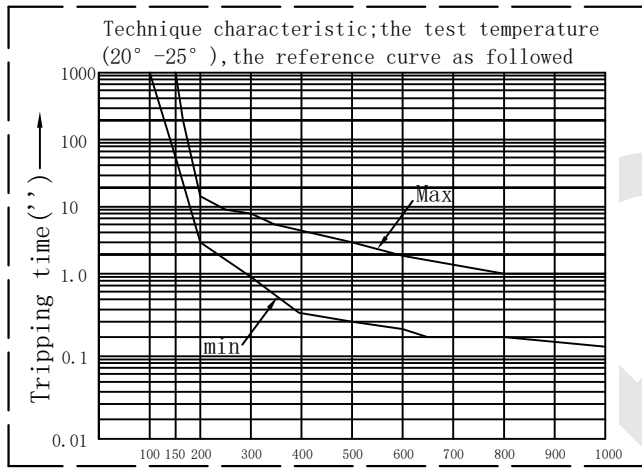


CBS-001 Long Pins



Specification

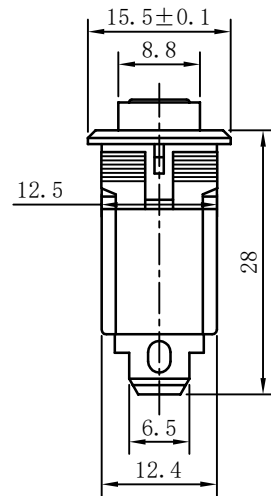
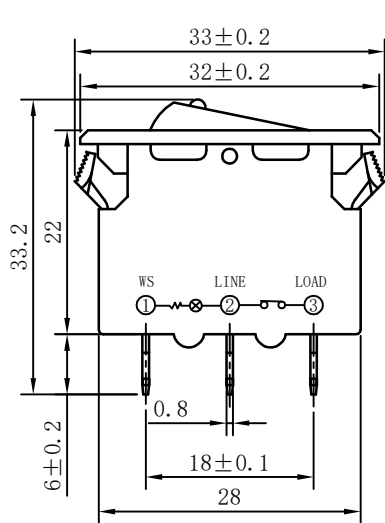
- 1) Rating current: min. 5A, max. 20A
- 2) Working voltage: min. 12V, max. 250V
- 3) Double usage of DC and AC
- 4) Application: household appliance and electrical motor
- 5) Current: 5A, 10A, 15A, 20A
- 6) Insulated resistance: $\geq 100M\Omega$
- 7) Dielectric strength: $\geq 1500VAC/1min$
- 8) Electrical Life: $\geq 10,000$ Time



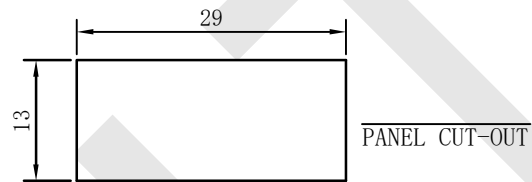
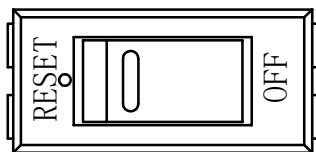
The experiment of short-circuit. ambient temperature: 25°

| current overload rating current | PCT | Tripping time |
|---------------------------------|-----|-------------------|
| 105% | | 1hour no tripping |
| 150% | | 1hour tripping |
| 200% | | 7. 0-80'' |
| 300% | | 0. 8-15'' |
| 400% | | 0. 35-5'' |
| 500% | | 0. 3-2. 8'' |
| 600% | | 0. 25-2'' |
| 800% | | 0. 2-1'' |
| 1000% | | 0. 15-0. 8'' |

| | | | | | |
|----------|--|-------|--|-----------------|------------------------|
| No. | | Verin | | Layout drawing | Only For Reference |
| Design | | | | | |
| Check | | | | | |
| Process | | | | | |
| Standard | | | | | |
| Verified | | | | Model: CBS-001L | BITUD ELECTRIC CO.,LTD |
| Approved | | | | | |

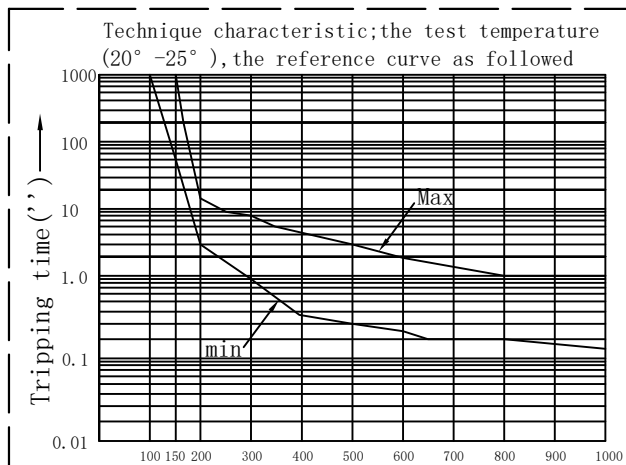


CBS-001 Short Pins



Specification

- 1) Rating current: min. 5A, max. 20A
- 2) Working voltage: min. 12V, max. 250V
- 3) Double usage of DC and AC
- 4) Application: household appliance and electrical motor
- 5) Current: 5A, 10A, 15A, 20A
- 6) Insulated resistance: $\geq 100M\Omega$
- 7) Dielectric strength: $\geq 1500VAC/1min$
- 8) Electrical Life: $\geq 10,000$ Time



The experiment of short-circuit. ambient temperature: 25°

| current overload rating current | PCT | Tripping time |
|---------------------------------|-----|-------------------|
| 105% | | 1hour no tripping |
| 150% | | 1hour tripping |
| 200% | | 7.0-80'' |
| 300% | | 0.8-15'' |
| 400% | | 0.35-5'' |
| 500% | | 0.3-2.8'' |
| 600% | | 0.25-2'' |
| 800% | | 0.2-1'' |
| 1000% | | 0.15-0.8'' |

| | | | | | | |
|----------|--|-------|--|-----------------|------------------------|--|
| No. | | Verin | | Layout drawing | Only For Reference | |
| Design | | | | | | |
| Check | | | | | | |
| Process | | | | | | |
| Standard | | | | | | |
| Verified | | | | Model: CBS-001S | BITUD ELECTRIC CO.,LTD | |
| Approved | | | | | | |